

Promoting Waste Minimisation at Household Waste Recycling Centres

Vehicle Restriction Policy

Reasons for Previous Policy

- Introduced in 1998 following significant increase in quantities of waste and costs
- Increase in waste considered due to introduction of Landfill Tax in 1996 which
 - encouraged the public to use the sites instead of hire skips
 - encouraged some traders to use sites rather than pay for disposal

Previous Van Ban Policy

- In place since 1998 to restrict / deter trade waste and large quantities of household
- Saves £1 million year
- 0.5 tonnes waste per person per year = 1 van load!
- Members confirmed support '98, '99, '03



MAN WITH A VAN

What has Changed?

- More challenges to the Policy
- Vehicle specifications have changed
- More people buying double cab pick ups which exceed 2.2 tonne van permit limit.

BUT

- Landfill Tax £40/tonne from 1.4.09, therefore more pressure to use our sites
- Waste Minimisation targets to achieve

4X4 Britain



4X4s accounted for 9.9% of new registrations in 2007
against 3.5% in 1998

Policy Changes

- Trailer up to 1.4m
- Vouchers for twin cab pick ups + 'modified' large vehicles
- Simplified application process
- Awareness campaign
 - Del Boy
 - Vblog

Warwickshire County Council

Household Waste
Recycling Centres



Vehicle Permit
Application Form

**For Warwickshire residents whose only
vehicle is a van, pick-up or large 4x4**

recycle
for Warwickshire

Warwickshire
County Council

Working for
Warwickshire

New Signage

STOP!

**VANS, PICK-UPS, AND
TRAILERS ARE RESTRICTED**

**A Permit/Voucher System Operates On
This Site For Some Commercial Vehicles**

**Large Transit-Type Vans and Vehicles above
3.5 tonnes GVW are NOT PERMITTED**



Please Call 01926 412593 for Details

*Working for
Warwickshire*

New Signage

RECYCLING ALL YOU CAN?

**ARE YOU AWARE THAT
LANDFILLING WASTE CAN
COST YOU THE TAXPAYER
MORE THAN RECYCLING IT?
- AND LANDFILL COSTS
THE EARTH!**



*Working for
Warwickshire*

New Signage

**Thank you
for recycling!**

Last month

66 % of the rubbish

**from this site was
recycled**



*Working for
Warwickshire*

New Signage

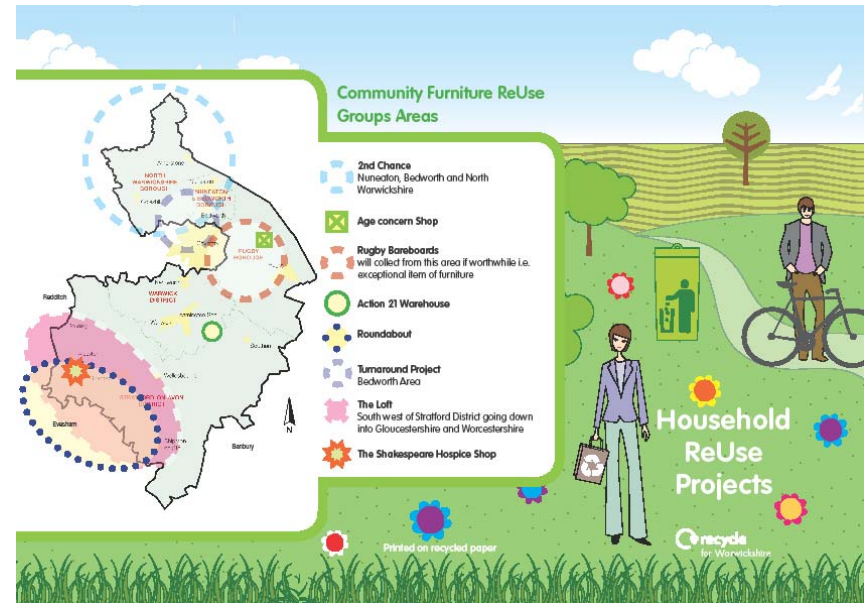
**INCIDENTS OF ABUSE
AGAINST SITE STAFF
WILL BE PROSECUTED TO
THE FULL EXTENT OF THE
LAW! IMAGES ARE BEING
RECORDED AND
MONITORED.**



*Working for
Warwickshire*

How You Can Help

- ‘Signposting’ and weblinks
- Integrate with info on bulky waste, recycling and reuse
- HWRC synergy with kerbside collections / expansion of materials collected



Bulky Waste

- Disadvantaged + households without vehicle access
- Low cost or no cost collections
 - Furniture Reuse
 - Freebay / Freecycle



Expected Outcomes

- Improved service
- Less complaints
- More public support
- Small increase in costs only, and

Happier Drivers



Thank you

Prepared by David
Whitehouse and Roy
Burton